



View Close, Highgate, N6
£1,999,995 Freehold



44 highgate high street, highgate village, london, n6 5hx
telephone 020 8348 8000 facsimile 020 8348 8232
email highgate@litchfields.com litchfields.com
offices also in hampstead garden suburb & crouch end





We are delighted to offer this beautifully presented 1960s built 4 bedroom detached family home. Offering stylish and versatile living and entertaining space on the ground floor which provides an open plan reception/kitchen area, second reception/playroom, study, utility room and guest cloakroom. The first floor has 4 bedrooms, the master with en-suite shower room and a separate family bathroom. Further benefits include a lovely west facing rear patio and garden and off-street parking. View Close is a quiet cul-de-sac of just 9 houses in the exclusive Kenwood area and is within a quarter of a mile of historic Highgate Village, Kenwood and the Heath, and is close to Highgate and Queen's Woods and Highgate tube. It is also within the catchment area for sought after primary schools and is a stone's throw from prestigious Highgate and Channing schools.

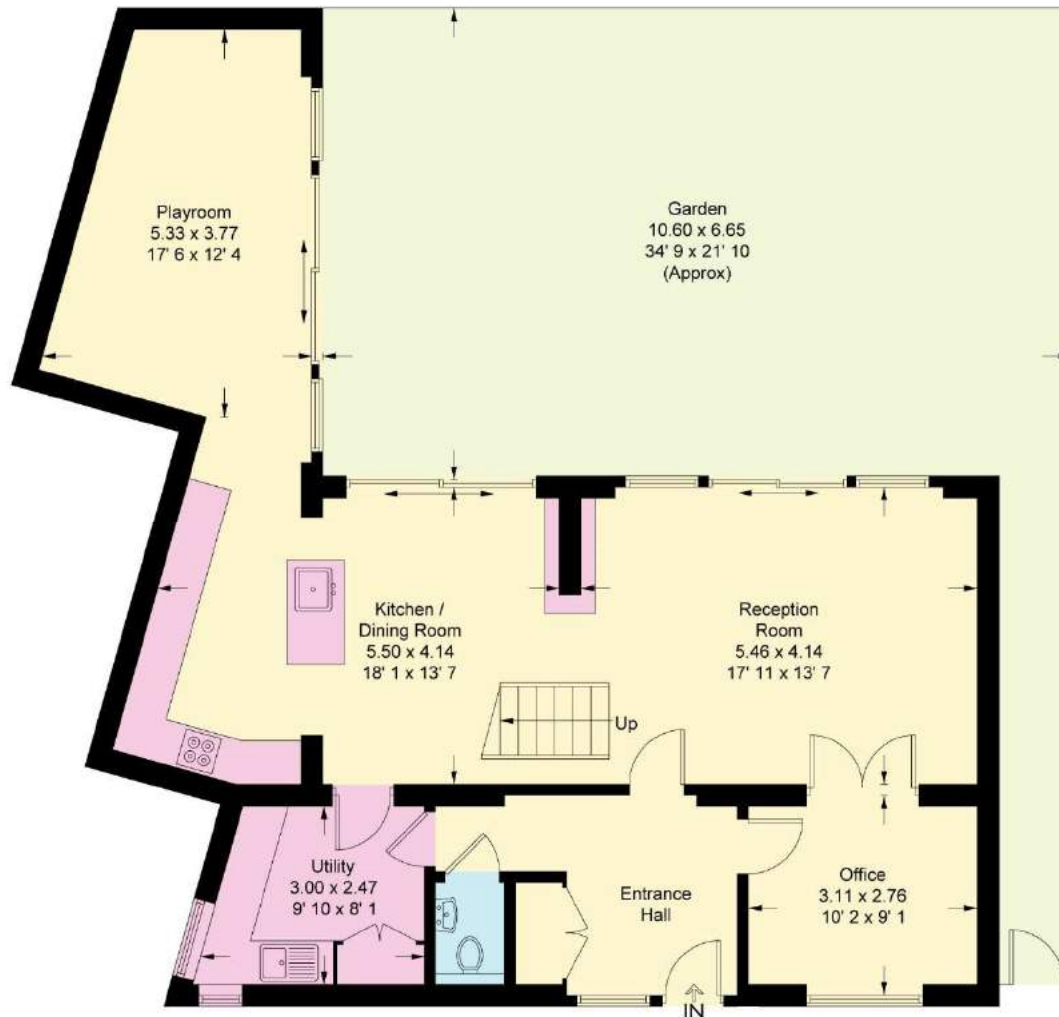




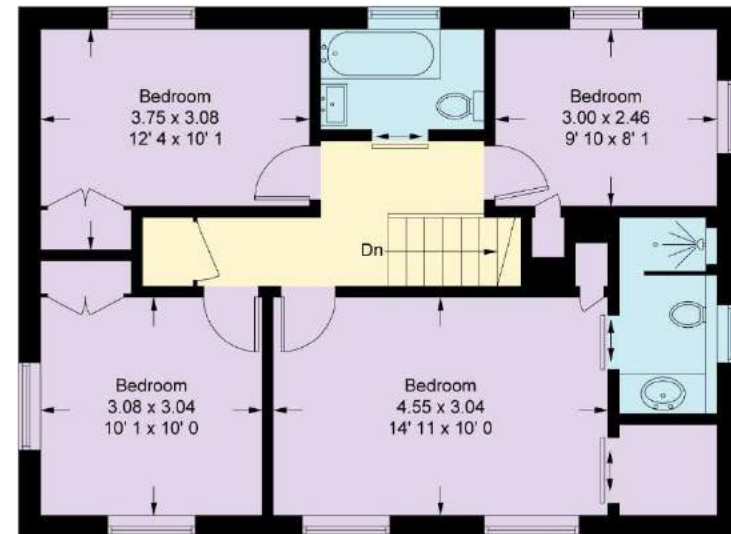
Immaculate, detached 1960s family home
Exclusive Kenwood location
2 reception rooms
4 bedrooms
Master with en-suite shower room
Family bathroom
Office/study
Utility room
Downstairs cloakroom
Storage loft
Off street parking
Close to Village, tube, Woods
Close to Kenwood & Hampstead Heath

View Close

Approximate Gross Internal Area = 1670 sq ft / 155.2 sq m



Ground Floor
1000 sq ft / 92.9 sq m



First Floor
670 sq ft / 62.3 sq m

This plan is not to scale and must be used as layout guidance only. All measurements and areas are approximate and should not be relied upon to provide accurate information. This plan must not be relied upon when making property valuations, design considerations or any other such relevant decisions. We accept no responsibility or liability (whether in contract, tort or otherwise) in relation to any loss whatsoever arising from or in connection with any use of this plan or the adequacy, accuracy or completeness of it or any information within it.